

School of Integrated  
Arts and Sciences

**Department of  
Integrated Global Studies**

Information 2027

Undergraduate Program taught in English



HIROSHIMA UNIVERSITY

## Message from the Dean



**Yamada Toshihiro**  
Dean, School of Integrated  
Arts and Sciences

Established in 1974, the School of Integrated Arts and Sciences strives to solve various problems of individuals and societies, aiming to create a happier and more sustainable future by integrating humanities and sciences, transcending academic disciplines. Through a multidisciplinary education that includes the study of various disciplines alongside a core discipline, students enhance their skills to solve the aforementioned problems. In 2018, we began English-medium instruction and actively welcomed international students, aiming to empower students to play a significant role on the global stage. I sincerely hope you can expand your possibilities at our school.

## Message from the IGS Department Head



**Seki Koki**  
IGS Department Head

IGS is a place of “crossing boundaries.” It is a crossing beyond who you have been until now. A crossing beyond the institutions that have shaped and surrounded you—family, community, nation. A crossing beyond the norms, morals, and assumptions you have long taken for granted. Through classes and seminars, internships, study abroad programs, and various other activities, IGS supports your efforts to undertake such crossings. Learning at university is not always visibly practical or immediately rewarding. Rather, it is often a steady and patient effort to sit with questions and think carefully about how things are formed and how they work. Yet a commitment to what may at first seem “useless” can ultimately lead to the imagination—and even the creation—of a better society. The four years of university are a precious time in which you can step back from the demands of responsibility, productivity, and efficiency imposed by society, and reflect on yourself from a freer perspective. During your four years at IGS, I encourage you to cultivate a genuine curiosity about human beings, society, and nature, and to develop a deep interest in what may at first glance appear “useless.”

## Guiding Principles of Hiroshima University

Based on its founding principle “a single unified university, free and pursuing peace” and its five guiding principles, Hiroshima University fulfills its roles as a national university.

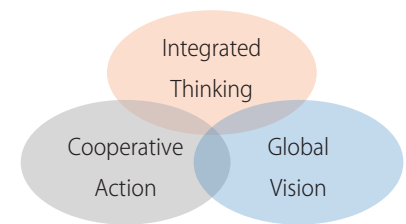
- **The Pursuit of Peace**  
To develop intellectual attitudes which always seek peaceful solutions to the problems affecting society and the world at large.
- **The Creation of New Forms of Knowledge**  
To evolve new systems of study which surpass existing frontiers of knowledge and encourage intellectual innovation.
- **The Nurturing of Well-Rounded Human Beings**  
To train graduates with well-developed and multifaceted personalities by means of an education which has breadth as well as depth.
- **Collaboration with the Local, Regional, and International Community**  
To create a university with a strong international awareness which can efficiently disseminate knowledge on a worldwide scale, in collaboration with local and regional communities.
- **Continuous Self-Development**  
To maintain a constant readiness to re-examine established ways of acting, and a constant openness to improvement and innovation.

## CONTENTS

Message from the Dean	1	Faculty	6
Message from the IGS Department Head	1	Admission Information	11
Guiding Principles of Hiroshima University	1	Scholarship	12
Study Integrated Arts and Sciences in Hiroshima, Japan	2	Fees	13
Department Welcomes:	2	Careers after Graduation	13
5 Fast Facts about Integrated Global Studies	3	Campus Life	14
Educational Program	4	Campus Location	Back cover
Core Subjects from Three Fields	5		

# IGS Study Integrated Arts and Sciences in Hiroshima, Japan

Students from all over the globe will learn together. They will develop intercultural communication competence, broad-mindedness, and cooperative skills to bring more peace to the world.



## IGS Department Welcomes:

- (1) Students who would like to understand global issues with an integrative perspective to pursue world peace while respecting linguistic, cultural, and religious differences;
- (2) Students who are interested in natural sciences and would like to work towards the harmonious relationship between people and nature; and
- (3) Students who are willing to improve language skills and make a contribution to a global society.



# IGS 5 Fast Facts about Integrated Global Studies

1. Full-time 4-year undergraduate program taught in English.
2. Language competence: Students will be competent in English and Japanese.
3. Interdisciplinary arts and sciences education: Students will have a wider perspective when solving problems related global issues in society.
4. Integrative perspectives and cooperative skills: Students will be able to think beyond nationality, region, religion, culture, and language.
5. Careers after graduation: Students will be ready to work in Japan or abroad, or pursue academic careers at graduate schools.



## ■ Degree Awarded:

Bachelor of Arts and Sciences

## ■ Number of Students:

40 per year

## ■ AY 2026 Academic Calendar:

### ○Spring Semester (Apr.1 – Sep.30)

Apr.1 – 7 ----- Spring Vacation

Apr.3 ----- Entrance Ceremony

Apr.8 – Jun.8 ----- 1st term (Classes)

Jun.9 – Aug.4 ----- 2nd term (Classes)

Aug.5 – Sep.30 ----- Summer Vacation

### ○Fall Semester (Oct.1 – Mar.31)

Oct.2 – Dec.1 ----- 3rd term (Classes)

Dec.2 – Feb.8 ----- 4th term (Classes)

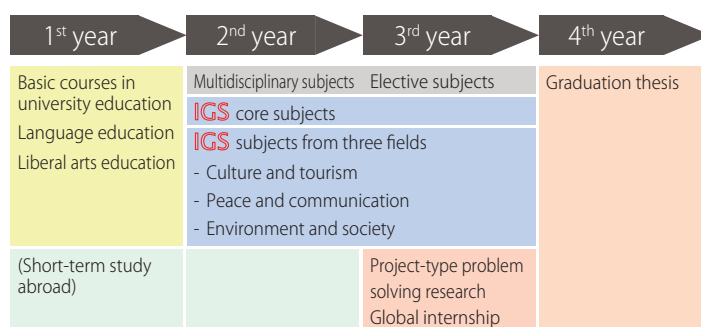
Dec.26 – Jan.5 ----- Winter Vacation

Feb.9 – Mar.31 ----- End-of Academic-Year Vacation

Mar.23 ----- Degree Conferment Ceremony

# IGS Educational Program

The IGS Department provides a liberal arts curriculum to develop a diverse approach to exploring and solving current global issues by utilizing an integrative perspective incorporating humanities, social sciences, and natural sciences. Consequently, knowledge and skills learnt through the curriculum should guide students to the exploration of and possible solutions to issues that modern society is currently facing around the globe.



- (1) Language education:
  - All courses are conducted in English.
  - Those whose first language (L1) is Japanese are required to attend a study abroad program in the second year.
  - Students whose first language (L1) is not Japanese will study Japanese intensively.
  - Students are encouraged to learn a third or fourth foreign language.
- (2) Tailor-made curriculum: students create their own individual curriculum guided by their tutors.
- (3) Multidisciplinary subjects to acquire the knowledge and methodology that provide a foundation for the possible solutions to social and environmental issues.
- (4) Courses to improve debate and presentation skills in both English and Japanese.
- (5) Curricula focused on culture and tourism, peace and communication, and environment and society.
- (6) Global internship for 3rd-year students in private companies, public organizations, nonprofit organizations, and research and educational institutions in and outside of Japan.
- (7) Project-type problem solving research and graduation thesis.

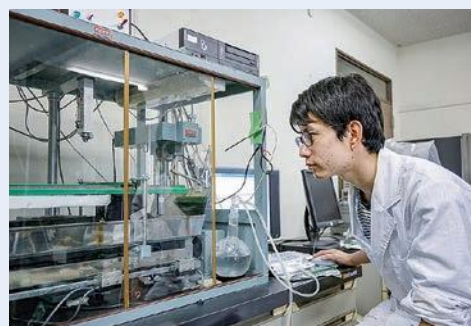
## You can Learn Science in IGS!

Are you willing to learn how to create more effective ways to use our limited resources and energy? Are you keen to make a contribution to solve the current environmental problems? We will pursue these important goals by ensuring that our students obtain a comprehensive and integrated education in natural sciences, social sciences, and intercultural communication.

To support our objectives, IGS has a number of professors in Physics (Physics of Complex Systems, Soft Matter Physics, etc.), Chemistry (Colloid and Interface Science, Biogeochemistry), Biology (Conservation Biology), and Geology (Climate System Science and Earth Science). These professors are involved in a variety of State of the Art research projects for the purpose of creating a sustainable, environment-friendly world.

In IGS, you will be trained to have a wide perspective necessary for investigating scientific problems while conducting scientific research in an integrated manner.

This will be accomplished by obtaining specialized knowledge from a number of different academic areas and through developing strong interpersonal communication skills which are needed to advance a peaceful integrated global society.



# IGS Core Subjects from Three Fields

## Culture and Tourism

Is globalization destroying regional culture? How will people's sense of place change among increasing migration and movement? Tourism is credited for improving intercultural understanding and contributing to the preservation of nature and culture. However, isn't there a danger of destroying the environment and turning culture into a mere spectacle? To tackle these questions, we will nurture the ability to discuss the relations between people and culture in a global society, between tourism and local communities, between thought and culture, and between Japanese culture and the world.



Courtesy of Hiroshima Prefecture

### Study Plan 1 If you want to contribute to regional and cultural development through tourism, you are encouraged to take:

- *Tourism Studies* in order to learn the basics of tourism from different angles;
  - *Japanese Tourism and Contemporary Issues in International Tourism* in order to discover the effects and problems of tourism; and
  - *Japanese Religious Culture* and anthropology subjects in order to think about the relationship between culture and globalization.
- Finally, consider ways tourism can contribute to regional development through fieldwork and your thesis to prepare you for a career in cultural organizations, tourism industries or in civil service.

## Peace and Communication

Do we all equally receive benefits from globalization? Could it be that, as the society is globalizing, the differences in world views and values, and the conflicts relevant to economic profits and political predominance will increase? We need to overcome such issues with the collective wisdom of the human race and mutual understanding in order to establish world peace. In IGS, you will explore background causes underlying such conflicts and appreciate differences among diversified culture and language groups. Such skills are necessary in order for us to live in a peaceful and harmonious society.



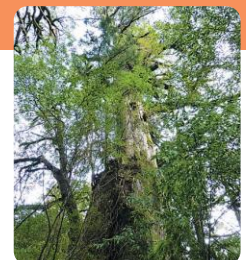
### Study Plan 2 If you are interested in conflict resolution from a multi-cultural perspective, you are encouraged to take:

- *Peace and Conflict Research* and *Ethics Killing and Violence* in order to obtain background knowledge concerning military conflicts especially in Asia, Middle East, and Africa; and
- *Psycholinguistics, and World Englishes* in order to be aware that other have distinct world views and values as well as cultural and linguistic diversity.

Possible future career opportunities include becoming an international civil servant, a diplomatic official or other positions at internationally- deployed private enterprises including travel industries and media.

## Environment and Society

The world population is expected to grow to 10 billion by the end of the 21st century, which will aggravate the shortage of natural resources. Therefore, we must intensify our efforts to develop human- and environment-friendly technology that can promote a civilized and comfortable life for all mankind and protect our natural environment. In IGS, you can major in science while studying global environmental issues.



### Study Plan 3 If you are interested in working as an environment-friendly scientist or engineer, you are encouraged to take the following courses:

- *Experimental Methods and Laboratory Work in Science for IGS* as well as *basic subjects in science* in order to gain solid knowledge required in scientific research;
- *Topics in History of Science, Studies on Japanese Companies and Social Entrepreneurship, and Cross-cultural Negotiation*; and *Graduation Thesis in a scientific field* to get trained as a scientist or an engineer.

These courses should widen your perspective on the Environment and Society and help you grow as a global-minded scientist.

## Seki Koki



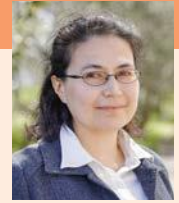
**Position** Professor

**Research Area** Cultural Anthropology, Urban Development and Politics, Social Policy, Area Studies of the Philippines

**Research Topic** My research deals with various aspects of contemporary globalization and development focusing particularly on the Philippines. Current researches are on social policy, civil society and welfare state as a modern institution of governmentality, and how these influence people's mode of life and identity. Specific topics are: urban development and politics in Global South, poverty, land tenure security and social housing projects in slum communities, natural resource management and political ecology in rural communities, and transnational migration.

**Message** If you are interested in exploring contemporary society and culture of Japan, Asia, and beyond by experiencing fieldwork in a local community, then IGS can be the best place for you!

## Villeneuve Masumi



**Position** Professor

**Research Area** Colloid and Interface Science

**Research Topic** My specialized area of research involves interface science. An interface is an extremely thin layer of a few molecules thick that only exists between two adjacent phases, nevertheless it is one of the most dominant factors comprising of various phenomena in nature such as the generation of clouds, material transport across cell membranes, sticky gecko feet, and the nature of soil colloids. It also affects stability of entire systems. I have been fascinated by these intriguing however invisible interfacial regions and now investigate this area of research through thermodynamics.

**Message** Environmental issues are generally made up of various complex factors. For those who are ambitious to confront such complexities, basic academic knowledge and skills are essential. Let us help you develop as a scientist or engineer who can relate your specialized area of interest to the surrounding fields and work with people of different research backgrounds.

## Katayanagi Mari



**Position** Professor

**Research Area** Peacebuilding

**Research Topic** Armed conflicts harm people, things and society. My research is about how to overcome the damage from a battle and build a peaceful society. Currently I am involved in a number of research projects and their themes include human rights-based peacebuilding, peacebuilding through business, second chance of education (after an interruption to schooling due to an armed conflict), security governance and migration.

**Message** In the era of globalization, we share various challenges beyond borders. Peace is one of them. It is not given, but requires our constant effort to preserve it. You can join network-building for peace through your studies of peacebuilding and multi-cultural communication here at Hiroshima University.

## Shibata Miki



**Position** Professor

**Research Area** Foreign Language Learning and Second Language Acquisition

**Research Topic** Learning a foreign language is not just about the differences between your native language and the new one; it also involves how factors like your emotions, beliefs, and the world around you affect your ability to learn. You might think things like, 'I want to learn, but I can't keep going,' 'I'm working hard, but I don't seem to improve,' or 'Why do I even have to study English?' I have looked into these concerns from both a social and psychological perspective to better understand how we learn a foreign language.

**Message** Learning is exploring plausible reasoning for 'Why?', but not finding a correct answer for it. Considering previous studies, you further investigate, think, and come to your own conclusion. Such a process is the essence of learning. Why don't you pursue your academic interests within IGS?

## Nishi Makoto



**Position** Professor

**Research Area** Cultural Anthropology, Medical Anthropology, Global Health

**Research Topic** My research focuses on how illness experiences of people in different parts of the world are shaped by socio-cultural factors including gender, power, and violence.

**Message** While health is a universal human concern, how certain illness is experienced by people can be strikingly different. Thus, exploring the issues concerning health and illness is to think about the commonalities and differences of the peoples around the world.

## Hosaka Tetsuro



**Position** Professor

**Research Area** Ecology, Entomology, Human-nature interaction

**Research Topic** I have been working on the diversity and role of insects in various ecosystems from tropical forests to urban settings. I am also interested in the interactions between human and nature, such as nature-based tourism, children's nature play and conflicts with wildlife, from the perspective of ecosystem conservation.

**Message** Fascination of studying is to make our world view broader or totally new by understanding things deeper. I look forward to seeing students who are full of curiosity.

## Yamada Toshihiro



**Position** Professor

**Research Area** Conservation biology, Forest ecology

**Research Topic** We can see a great diversity of living organisms (biodiversity) on the earth. I am intrigued by the questions how and why the earth has such a tremendous biodiversity. On the other hand, this great biodiversity is rapidly being lost by anthropogenic impacts. I would like to contribute to building an international framework in order to conserve our current biodiversity.

**Message** What knowledge do we need to conserve the biodiversity of our planet? Of course, ecology is essential to the accomplishment of this goal. In addition, we have to be knowledgeable of a number of fields including ethics, economics, sociology, and jurisprudence. You can learn all these essential subjects in our IGS Department so you can act on biodiversity conservation. IGS is the best place to learn and practice the conservation of biodiversity!

## Iwamoto Yoko



**Position** Associate Professor

**Research Area** Atmospheric Chemistry, Chemical Oceanography

**Research Topic** I am studying tiny particles (aerosol) suspended in the atmosphere. Aerosol can act as nucleus of cloud particle. In other words, clouds and raindrop cannot be formed without aerosol. In order to grasp the role of aerosol in climate change and biogeochemical cycles, I am measuring physical and chemical characteristics of aerosol in various places such as ocean, mountains, urban, rural site and so on.

**Message** In order to deal with global environmental problems, it is important to highly appreciate your expertise and to have an interdisciplinary / international perspective. I am happy if I can conduct field observations with the students who gained broad perspective and high communication skills at IGS in the future.

## Kakee Tomoko



**Position** Associate Professor

**Research Area** Conflict Resolution, International Law

**Research Topic** I am interested in international conflicts on historical issues and post-war compensation. My research has covered various international law topics such as the UN and the use of force, environmental rules for deepsea mining. I am researching ways for conflict resolution and conflict transformation through legal and nonlegal approaches using Nonviolent Communication (NVC).

**Message** Conflicts, from international to personal ones, can provide opportunities to learn various things. I hope, through the conflict resolution study, we can recognise our bias and habit of interpretation and discuss elements necessary for resolving conflicts.

## Kawamoto Naoe



**Position** Associate Professor

**Research Area** Social welfare and education for international students

**Research Topic** I am researching welfare issues related to children and elders who are foreign minorities in Japan and Japanese nationals whose origin is from outside of Japan. I have also been conducting research on welfare and long-term care of war-displaced Japanese returning from China. In addition, I investigate how students acquire academic skills from the viewpoint of different learning environments.

**Message** I am very happy to teach students with diverse cultural differences in IGS. I hope to discuss these cultural similarities and differences in our classes. I believe learning and discussing differences is the first step to mutual understanding. Let's enjoy our experiences together!

## Qu Meng



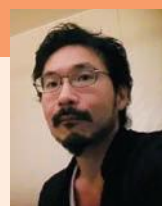
**Position** Associate Professor

**Research Area** Tourism Geography, Critical Tourism Studies, Rural and Island Studies

**Research Topic** I specialize in Tourism Geography and Creative Tourism, with a particular interest in how creativity contributes to community transformation and revitalization across diverse contexts. My research examines the role of creative industries, such as arts and events, as drivers of regional revitalization. (see more on <https://www.qu-meng.com>)

**Message** The world you are about to enter is filled with uncertainty and complex challenges. In an era without single answers, I hope you will develop problem-solving skills, critical thinking, and the ability to collaborate and co-create with others. By exploring between theory and practice, I encourage you to find your own balance with the world, transcend borders and differences, and help create a future that can be shared by all.

## Kondo Masayuki



**Position** Associate Professor

**Research Area** Greenhouse gases dynamics, Climate systems

**Research Topic** I conduct research on climate change and greenhouse gas dynamics. Even though "climate change" has become widely known in recent years, there are still many aspects we do not understand. What keeps the Earth's climate habitable? What are the potential consequences if global warming continues? I am investigating the mysteries of the habitable climate through integrated analysis using numerical models, as well as ground and satellite observations.

**Message** I oversee one of the few laboratories in Japan that specialize in greenhouse gases, focusing on atmospheric chemistry, atmospheric physics, and geophysics. Let's start with the basics of climate change and greenhouse gases and then consider together the possibility of achieving carbon neutrality.

## Shirakawa Toshiyuki



**Position** Associate Professor

**Research Area** Research of Social Stratification, Sociology of Education, Social Research/Survey Methods

**Research Topic** The study of social inequality focuses on the fact that people are divided into several stratum according to their education and income. Regarding occupation, it is also possible to assess whether it is high or low once you have determined the rule. The position that is supposed to be high is limited in number and not everyone can reach there. I investigate the influences of gender and parents' status on people's educational decision making or occupational choice by using statistical analysis. Parents' education correlate highly with their offsprings' university entrance rate. Despite the increase in women in tertiary education, men and women are still concentrated in different study programmes. To clarify the social mechanism creating such a difference is my research motivation.

**Message** Studying at university often does not give simple answers, but here is also interesting point. I would like us to explore the various unsolved problems together.

## Taguchi Yoko



**Position** Associate Professor

**Research Area** Cultural Anthropology, South Asian Studies

**Research Topic** Inspired by the anthropology of personhood and morality (What is human? What is good?), I have explored these concepts through fieldwork on civic movements and care work in India. Drawing on anthropological cases and theories, I'm researching diverse possibilities for humans as mutually dependent beings.

**Message** Anthropology teaches us that what we consider "normal" is not normal at all in other socio-material contexts. If such differences exist, things that seem unchangeable to us might also be changed by tinkering with the details. Let's explore human possibilities and try out new ideas!

## Tanaka Shinpei



**Position** Associate Professor

**Research Area** Physics of Complex Systems

**Research Topic** I study complex systems where many elements interact with each other. Even if each element is simple, their behaviors as a whole can be very complex. Moreover, the system sometimes determines the behaviors of its elements. Thus, the elements and the system are in an interwound relationship. I conduct both experiments and computer simulations to tackle this complex relation.

**Message** Anything can be the target of physics. Physics is an attempt to understand the general mechanisms of everything from materials to living things, natural environments, human societies, or even the Internet. There, the elements and the system are mutually and complexly entangled. We welcome anybody who has a keen mind and a broad interest in any complex phenomena.

## Robert H. Taferner



**Position** Associate Professor

**Research Area** Applied Linguistics, Second Language Acquisition, Pragmatics

**Research Topic** My main research areas include Psycholinguistics and Pragmatics. Within the area of Psycholinguistics I am interested in second language learning through investigating bilingualism, cognition, and crosslinguistic influences. In particular, I am currently developing a Crosslinguistic Image Schema Differential (CISD) hypothesis that tries to address the difficulties learners have in acquiring spatial and temporal adpositions (e.g., prepositions and particles). I have also been interested in Pragmatics (Language in Use) since the beginning of my teaching career. Currently, I am contributing to research on intercultural sensitivity development in order to help international students acculturate to their new learning environments. Furthermore, I am addressing English as a Lingua Franca as part of my investigation of Workplace Pragmatics within our IGS Internship Program.

**Message** I came to Japan to practice martial arts and learn about Japanese culture. Through studying Japanese, I began to understand the difficulties in learning and acquiring a new language. With this in mind, I hope I can help you brighten your future as part of the IGS community.

## Curtis Andrew Rigsby



**Position** Associate Professor

**Research Area** Japanese Religion and Culture, Philosophy, Comparative Thought

**Research Topic** My research focuses on Japanese philosophy, especially modern developments such as the Kyoto School surrounding Kitarō Nishida. In particular, I have examined Japanese theories of ultimate explanation, such as the character of divinity, including practical ramifications. Correspondingly, I examine dialogue between traditions and the potential contributions they can make to solving real problems in contemporary life.

**Message** What are the foundations of reality? What is beauty and value? How should we live? Why do people see the world differently and why do people form different ways of living? Are there commonalities between different cultures and religions? Are differences between people impediments or strengths? My own efforts struggling with these questions are at the core of why I think university experience is so precious, and are also a primary reason why I have studied Japan.

## Watanabe Chiho



**Position** Associate Professor

**Research Area** Soft Matter Science, Biophysical Chemistry

**Research Topic** Our body is composed of many cells. Cells are composed of many molecules which often called biomolecules. From experiments using artificial cells made of such molecules, I aim to understand complex biological phenomena from simplified systems.

**Message** I hope that you will enjoy your time as a university student to the fullest and cultivate the strength to live through various experiences, even in the current global difficulties.

## Wang Kunyang



**Position** Assistant Professor

**Research Area** Watershed Hydrology, Climate Change, Non-point Source Pollution

**Research Topic** My research aims to clarify the impacts of climate change and human activities on water circulation and nutrient dynamics, and to explore approaches that contribute to sustainable water and environmental management at the watershed scale. In particular, I integrate hydrological modeling with remote sensing and deep learning to evaluate the effects of urbanization, forest change, and agricultural practices.

**Message** Understanding water environments is essential for protecting the future of societies and ecosystems. Together with students and fellow researchers, I hope to co-create new knowledge and contribute to building a sustainable future.

## Kawaguchi Kenta



**Position** Assistant Professor

**Research Area** Earth Science, Applied Geology, Geology

**Research Topic** My research topic is Earth Science. I am currently investigating the formation mechanism of the Asian continents, including the Japanese Islands, through fieldwork and analytical studies.

**Message** Earth Science integrates geological, physical, and chemical techniques and knowledge. In other words, we can attempt to solve the unsolved problems using our respective areas of expertise. Let's enjoy Earth Science with a broad perspective and specialized fields of study!

## Candelaria John Lee Pamplona



**Position** Assistant Professor

**Research Area** Heritage Studies, Memory Studies, Philippine and Southeast Asian Studies

**Research Topic** My research explores how societies remember and contest their wartime past, drawing on interdisciplinary approaches across heritage studies, memory studies, and media studies with a regional focus on the Philippines and Southeast Asia. I examine the ways states and communities deploy commemorative practices to shape national narratives, and I am particularly interested in how digital media platforms have become spaces where traces of conflict circulate, gain new audiences, and acquire fresh political meaning. This work connects questions of war memory and heritage politics to broader concerns about peacebuilding and communication in the digital age.

**Message** Hiroshima is a remarkable place to think critically about how the past shapes the present. If you are drawn to questions about why certain histories are remembered while others are silenced, or how digital media can serve as a tool for peacebuilding and historical reckoning, I would be glad to work with you.

## Koba Arisa



**Position** Assistant Professor ※Joined on May 1, 2026

**Research Area** Applied Linguistics, Discourse Analysis

**Research Topic** My research is grounded in discourse analysis, a relatively new field in linguistics. The term discourse can refer to both widely shared beliefs and everyday interactions. Through the analysis of discourse, we can examine the relationship between society and the individual.

**Message** I believe that the ability to read texts critically is what fundamentally distinguishes university learning from pre-university education. I hope you will develop the capacity to question assumptions.

## Komada Natsuki



**Position** Assistant Professor

**Research Area** Plant taxonomy, Forest ecology

**Research Topic** We can find various types of plants on Earth, but we still do not fully understand where and which species of plants grow and how they maintain diversity. I have been conducting research to answer these questions, focusing on plant taxonomy and ecology, primarily studying plants in tropical rainforests. My primary focus is on "epiphytes," which are a group of plants that grow on trees and are important for maintaining diversity. Forests are crucial ecosystems for sustainable development, yet they are also facing serious threats of environmental destruction. I hope that my research can contribute to a better understanding and conservation of forests.

**Message** For field surveys overseas and studies with a global perspective, it is important to acquire a broad knowledge base that transcends disciplinary boundaries and to develop communication skills. I believe that IGS provides a good environment for developing these abilities. I look forward to engaging in research that utilizes your diverse ideas, talents, and curiosity.

## Simona Zollet



**Position** Assistant Professor

**Research Area** Sustainable agriculture and food systems, rural sociology

**Research Topic** My research focuses on creating more sustainable farming landscapes through organic agriculture and agroecology, as well as developing new ways to connect producers (farmers) and consumers (eaters) and rural and urban areas within local food systems. I also research the socioeconomic and environmental sustainability of rural communities and peripheral areas (such as islands) in Japan and Europe (mainly Italy). This includes examining rural in-migration (people moving from urban to rural areas), small business creation and social entrepreneurship, the use or creation of local food and farming heritage in innovative ways, and policies related to rural revitalization.

**Message** I came to Japan for the first time as an exchange student myself, and the period I spent studying abroad changed my life in many ways, providing me with opportunities that I could have never imagined before. I wish you an enjoyable time in IGS, and I hope you make the most of the many new experiences and encounters you will have here!

## Yoshida Mariko



**Position** Assistant Professor

**Research Area** environmental anthropology; blue humanities; food chain politics; multispecies ethnography; science and technology studies (STS)

**Research Topic** Mariko Yoshida is an anthropologist whose research focuses on ecological uncertainty and precariousness intertwined within the metabolic dynamics of the underwater realm. She is currently working on her first monograph, tentatively titled "Metabolic Thinking with Oysters in the Anthropocene," which examines the life of Pacific oysters to understand emergencies, alterations, and disruptions that occur at organismal, societal, and planetary scales. Drawing upon the inter- and intraspecies practices of Japanese aquaculture, Yoshida explores how these filter feeders, which sequester nutrients and chemicals, reshape the intersections of nature and culture—wild and domesticated, native and invasive, and from hermaphrodite origins to bioengineered spawnless commodities. Yoshida teaches a wide range of courses on environmental anthropology, political economy, feminist STS, the blue humanities, and multispecies ethnography. She received her Ph.D. in Anthropology from the Australian National University and holds M.A.s in Anthropology from Columbia University of New York (awarded the Best MA Thesis Prize) and in Media and Governance from Keio University. She has been a recipient of grants from multiple funders, including the Fulbright Program (2011–2013), the Konosuke Matsushita Memorial Foundation (2019–2020), and the Lotte Foundation (2024–2026).

**Message** Cultural anthropology has been defined as "the most humanistic of the sciences and the most scientific of the humanities" (Kroeber 2003). I encourage students to critically examine the underlying modes of knowledge production inherent in both "science" and "humanism" in order to address the challenges posed by the Anthropocene/Capitalocene.



# IGS Admission Information

## 1. Date of Admission: April 2027

## 2. Candidate Selection System

Selection System		Number of Students to be Admitted	Main Target	Time Period
A	Overseas Entrance Interview Examination for International Applicants in July	4	International applicants who take the examination within their own country	Application: June
				Document Screening: July
				Interview Examination: July
				Result Notification: July
B	Overseas Entrance Interview Examination for International and Japanese Applicants in November	10	Applicants of all nationalities who take the examination within their own country	Application: October
				Document Screening: October
				Interview Examination: November
				Result Notification: December
C	On Campus Entrance Interview Examination for International and Japanese Applicants in November	6	Applicants of all nationalities who take the examination in Hiroshima	Application: October
				Document Screening: October
				Interview Examination: November
				Result Notification: December
D	On Campus Entrance Interview Examination for International Applicants in February	Limited	International applicants who take the examination in Hiroshima	Application: December-January
				Document Screening: January
				Interview Examination: February
				Result Notification: March

Note: In the selection system A and B, applicants are not required to come to Japan for their interview. The applicants are requested to take the online interview in English. In the selection system C and D, applicants are required to take their interview in English at the Hiroshima University Higashi-Hiroshima campus.

## 3. English Proficiency Requirements

Applicants must submit any one of the following English proficiency certificates as an application requirement.

English Proficiency Test	Application Requirements	
	Selection System A, B and D	Selection System C
1) Cambridge English ※	160 or above in overall score	140 or above in overall score
2) EIKEN	A passing Pre-1 <sup>st</sup> grade or above	A passing 2 <sup>nd</sup> grade or above
3) GTEC (CBT Type and Authorized Version)	1180 or above	930 or above
4) IELTS™ (Academic Module)	5.5 or above	4.0 or above
5) TEAP (4 skills)	309 or above	225 or above
6) TOEFL iBT®	72 or above (0-120 scale) 4 or above (1-6 scale)	44 or above (0-120 scale) 3 or above (1-6 scale)
7) TOEIC® L&R and TOEIC® S&W This score is determined by multiplying your S&W score by 2.5 and adding your L&R score	1560 or above	1150 or above

Note: Applicants who satisfy either one of the following two requirements are not required to submit the above-mentioned English proficiency certificates.  
 (1) Applicants who have undertaken three years or more of their secondary education (Senior high school, Junior high school, etc.) in English as their primary language of instruction.

(2) Applicants who are taking or have taken the International Baccalaureate Diploma with English as the language of instruction. DLDP (Dual Language IB Diploma Programme) is excluded since the language of instruction is not entirely in English.

※ Only "Schools" and "General and higher education" modules are accepted.

For more details, please see the application guide.

## Scholarship for IGS International Students

We offer full or partial scholarship opportunities to international students enrolled in IGS bachelor's program to help student succeed academically. Prospective students may apply for these scholarship programs through the IGS Office.

These scholarship programs are offered to students who do not have a Japanese nationality and have/will have "Student" status of residence. Updated information should be obtained from IGS website and emails from the IGS office.

### 1. Japanese Government (MEXT\*) Scholarship (University Recommendation)

\*Ministry of Education, Culture, Sports, Science and Technology

Type	Government (MEXT)
Award	- Monthly allowance of JPY 117,000 - Full waiver of all school fees - Air ticket to and from Japan
Term	Four years
Eligibility	- Not having Japanese nationality - Success in IGS admissions for April 2027 intake - High academic performance in the previous education institution - Under 24 years old at the time of enrollment
Application	December - candidates will be contacted by IGS office.
Decision	March

### 2. Reservation Program for Monbukagakusho Honors Scholarship for Privately-Financed International Students by Pre-arrival Admission (University Recommendation)

Type	Government (MEXT/JASSO)
Award	Monthly allowance of JPY 48,000
Term	One year
Eligibility	- Not having Japanese nationality and not living/studying in Japan - Success in IGS admissions for April 2027 intake - High academic performance in the previous education institution
Application	Candidates will be contacted by IGS Office in March
Decision	April

Please note that the information above applies only to the new students of April 2027 intake and that the available scholarship opportunities for students enrolled in and after 2028 are subject to change.

# IGS Fees

## Required Enrollment Expenses (as of April 2026)

Undergraduate students must pay the following application, enrollment, and tuition fees:

Application Fee	Enrollment Fee	Tuition Fee
JPY 17,000	JPY 282,000	JPY 535,800 (per year)

(If tuition is revised while you are a student, you will pay the new tuition rate after the revision.)

## Living Expenses in Higashi-Hiroshima

The average monthly living expenses for international students, is approximately JPY 147,000. Note that living expenses in the area around Hiroshima University are cheaper than metropolitan areas. (The national average is JPY 171,000.)

Source: Lifestyle Survey of Privately Financed International Students, 2023 (JASSO)

# IGS Careers after Graduation

After your graduation, you have various career options available to you, depending on the focus of your studies. If you study mainly humanities and social sciences subjects, you may be able to pursue a career in the tourism industry, mass media, a non-governmental organization, a consulting firm, a think tank, etc. If you study mainly natural science subjects, you may be able to pursue a career as a scientist, an engineer, a designer, or even an entrepreneur. About 60% of our fourth and fifth graduates got a position in private companies including, Hilton Worldwide International Japan G.K., IBM Digital Services Company.Japan, Ltd, Micron Memory Japan, K.K., ROHTO Pharmaceutical Co., Ltd., Tsuneishi Shipbuilding Co., Ltd.. About 23% of graduates went on to graduate schools. (As of March 2026)



# IGS Campus Life

## A Friendly and Supportive Environment

Our campus is full of greenery where you can enjoy vibrant student activities and also get involved in local Japanese life. Students will meet each other through the freshmen orientation in April. This should be a great opportunity to make new friends. Various support for your studies and lifestyle are available. In addition, there are many events and activities on campus such as the *Yukata Festival* (people wear a special summertime *kimono* during this festival). Students can make their campus life more enjoyable by participating in such social activities.



## Accommodations

All successful applicants will be eligible to stay in the Ikenoue Student Dormitory for their first two years of study.

### **Ikenoue Student Dormitory** (Higashi-Hiroshima City, Kagamiyama 2-812-62)

Ikenoue was founded for the dual purpose of providing appropriate housing to students and giving students the chance to experience student life as a responsible adult. To promote mutual understanding and international exchange, accommodations in the dormitory are offered to both Japanese and international students. Rent including common expenses ranges from JPY 8,200 to JPY 17,700 per month, depending on the room type.

From students' third year, there will be help available when they move to private apartments. Most apartments include a kitchen, bath, and bathroom, and rent ranges from JPY 20,000 to JPY 50,000 per month, depending on the size of the apartment. The co-op shop on campus is also a good place to search for an apartment.



# IGS Campus Location



Hiroshima University is situated in Higashi-Hiroshima City, a regional hub about 30 minutes by train from Hiroshima City. The area surrounding the campus is a beautiful natural area that has long been famous for the brewing of sake, Japanese rice wine. Saijo, the area in which Hiroshima University is located, has all the big city amenities while keeping its rural appeal. Every October, Saijo holds the Sake Matsuri, an energetic festival celebrating the area's long history of sake brewing. Higashi-Hiroshima City and Saijo provide a beautiful place to study while catering to all the needs of university students.



## Contact



Hiroshima University  
School of Integrated Arts and Sciences  
Department of Integrated Global Studies

1-7-1 Kagamiyama, Higashi-Hiroshima City  
Hiroshima, Japan 739-8521  
TEL: +81-82-424-7988  
E-mail: [igs@hiroshima-u.ac.jp](mailto:igs@hiroshima-u.ac.jp)  
<https://www.hiroshima-u.ac.jp/en/igs/>



Printed in May 2026 Unauthorized copying prohibited. All rights reserved.

